

IN THE DISTRICT COURT OF THE FIFTH JUDICIAL DISTRICT OF THE
STATE OF IDAHO, IN AND FOR THE COUNTY OF TWIN FALLS

In Re CSRBA) PARTIAL DECREE PURSUANT TO I.R.C.P. 54(b)
Case No. 49576) FOR FEDERAL RESERVED
)
) WATER RIGHT NO. 91-07956E

NAME AND ADDRESS: UNITED STATES OF AMERICA ACTING THROUGH
USDA FOREST SERVICE
550 W FORT ST MSC 033
BOISE ID 83724

SOURCE: See Attachment 1, Column A TRIBUTARY: See Attachment 1, Column B

Sources are located on National Forest System Land in the Black Prince Creek-St Joe River subwatershed (HUC12 170103040603).

QUANTITY: The amount of water necessary to control and suppress forest fires.

PRIORITY DATE: 11/13/1945

POINT OF DIVERSION: See Attachment 1, Columns C through G

PURPOSE AND PERIOD OF USE:

<u>PURPOSE OF USE</u>	<u>PERIOD OF USE</u>
Administrative-Fire Suppression	01/01 - 12/31

PLACE OF USE: National Forests in Idaho and the Kaniksu, Lolo and Kootenai National Forests in Montana.

See Attachment 2.

OTHER PROVISIONS NECESSARY FOR DEFINITION OR ADMINISTRATION OF THIS WATER RIGHT:

This right is limited to the intermittent diversion and use of water for the purpose of suppressing wildfires. This water right shall not be used as a basis to prevent the future appropriation of water.

This partial decree is subject to such general provisions necessary for the definition of the rights or for the efficient administration of the water rights as may be ultimately determined by the Court at a point in time no later than the entry of a final unified decree. Idaho Code § 42-1412(6).

RULE 54(b) CERTIFICATE




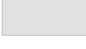

With respect to the issues determined by the above partial judgment it is hereby CERTIFIED, in accordance with Rule 54(b), I.R.C.P., that the court has determined that there is no just reason for delay of the entry of a final judgment and that the court has and does hereby direct that the above partial judgment is a final judgment upon which execution may issue and an appeal may be taken as provided by the Idaho Appellate Rules.

Eric J. Wildman
Presiding Judge of the
Coeur d'Alene-Spokane River Adjudication

Attachment 1

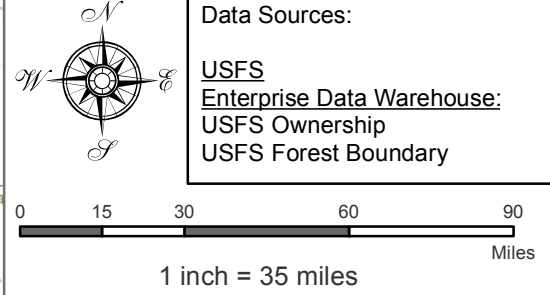
	A	B	C	D	E	F	G
1	SOURCE NAME	TO TRIBUTARY	TOWNSHIP	RANGE	SECTION	QQ	SURVEY CODE AND NUMBER
2	Unnamed Stream	Black Prince Creek	46N	03E	13		
3	Unnamed Stream	Black Prince Creek	46N	03E	13		
4	Unnamed Stream	Black Prince Creek	46N	03E	13		
5	Unnamed Stream	Black Prince Creek	46N	03E	13		
6	Black Prince Creek	St Joe River	46N	03E	25		
7	Unnamed Stream	Black Prince Creek	46N	03E	25		
8	Unnamed Stream	Black Prince Creek	46N	03E	25		
9	Unnamed Stream	Black Prince Creek	46N	03E	25		
10	Unnamed Stream	Black Prince Creek	46N	03E	25		
11	Unnamed Stream	Black Prince Creek	46N	03E	25		
12	Unnamed Stream	Black Prince Creek	46N	03E	25		
13	Unnamed Stream	Black Prince Creek	46N	03E	25		
14	Unnamed Stream	Black Prince Creek	46N	03E	25		
15	Unnamed Stream	Black Prince Creek	46N	03E	25		
16	Unnamed Stream	Black Prince Creek	46N	03E	25		
17	Francis Creek	St Joe River	46N	03E	27		
18	Mud Cabin Creek	St Joe River	46N	03E	27		
19	Unnamed Stream	Francis Creek	46N	03E	27		
20	Unnamed Stream	Mud Cabin Creek	46N	03E	27		
21	Unnamed Stream	Mud Cabin Creek	46N	03E	27		
22	Francis Creek	St Joe River	46N	03E	33		
23	Mud Cabin Creek	St Joe River	46N	03E	33		
24	Unnamed Stream	Mud Cabin Creek	46N	03E	33		
25	Unnamed Stream	Mud Cabin Creek	46N	03E	33		
26	Unnamed Stream	Mud Cabin Creek	46N	03E	33		
27	Unnamed Stream	Mud Cabin Creek	46N	03E	33		
28	Black Prince Creek	St Joe River	46N	04E	7		
29	Unnamed Stream	Black Prince Creek	46N	04E	7		
30	Unnamed Stream	Black Prince Creek	46N	04E	7		
31	Unnamed Stream	Black Prince Creek	46N	04E	7		
32	Unnamed Stream	Black Prince Creek	46N	04E	7		
33	Unnamed Stream	Black Prince Creek	46N	04E	17		
34	Unnamed Stream	Black Prince Creek	46N	04E	17		
35	Unnamed Stream	Black Prince Creek	46N	04E	17		
36	Black Prince Creek	St Joe River	46N	04E	19		
37	Unnamed Stream	Black Prince Creek	46N	04E	19		
38	Unnamed Stream	Black Prince Creek	46N	04E	19		
39	Unnamed Stream	Black Prince Creek	46N	04E	19		
40	Unnamed Stream	Black Prince Creek	46N	04E	19		
41	Unnamed Stream	Black Prince Creek	46N	04E	19		
42	Unnamed Stream	Black Prince Creek	46N	04E	19		
43	Unnamed Stream	Black Prince Creek	46N	04E	19		
44	Unnamed Stream	Black Prince Creek	46N	04E	19		
45	Unnamed Stream	Black Prince Creek	46N	04E	19		
46	Unnamed Stream	Black Prince Creek	46N	04E	19		
47	Unnamed Stream	Black Prince Creek	46N	04E	19		
48	Unnamed Stream	Black Prince Creek	46N	04E	19		
49	Unnamed Stream	Black Prince Creek	46N	04E	19		
50	Unnamed Stream	Harvey Creek	46N	04E	29		

Key to Features

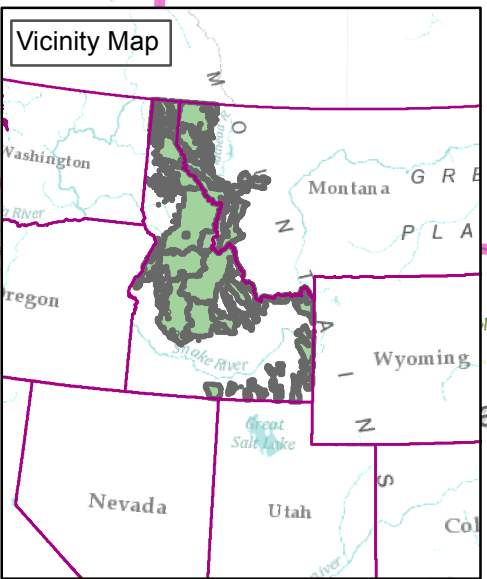
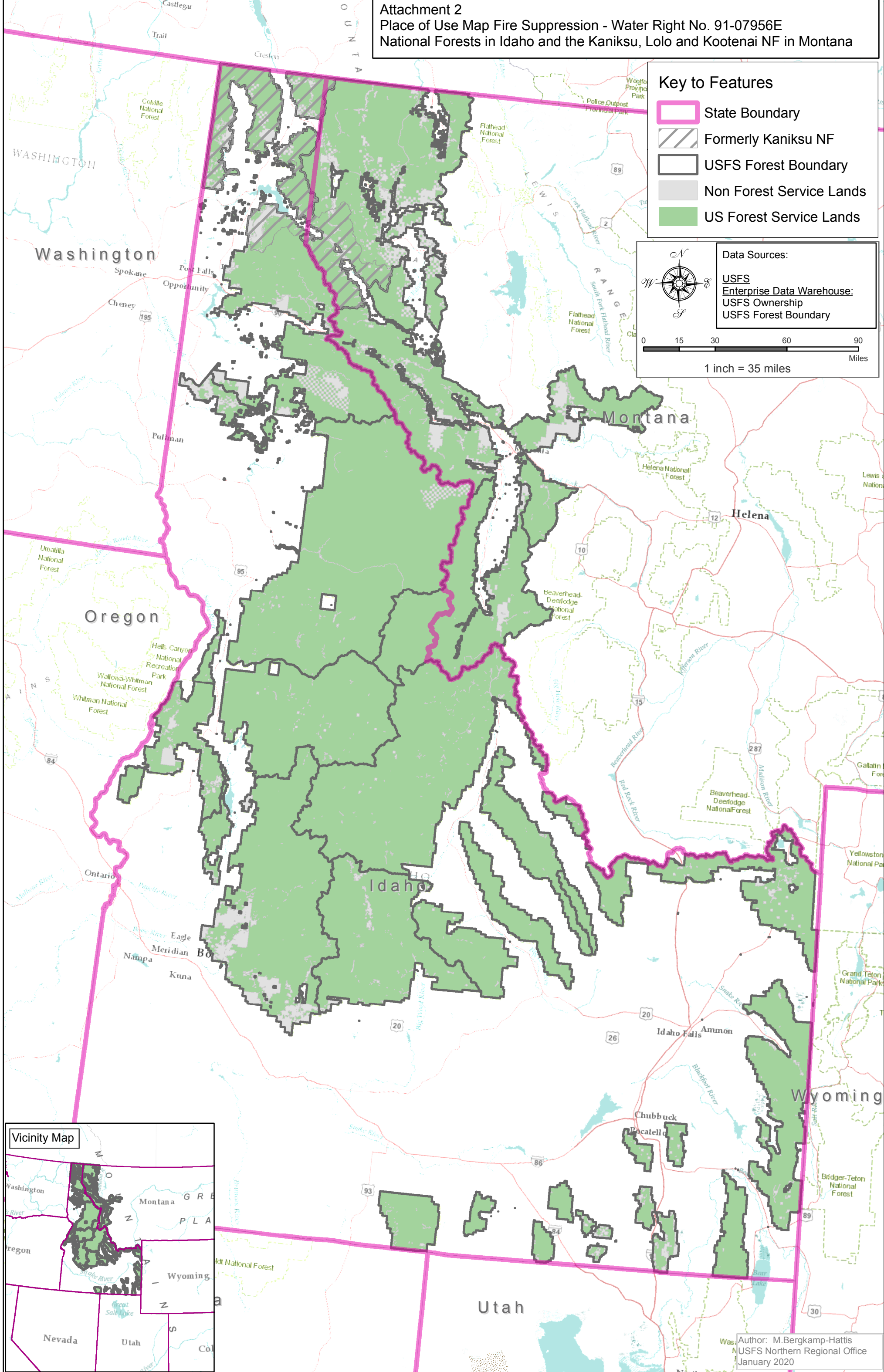
-  State Boundary
-  Formerly Kaniksu NF
-  USFS Forest Boundary
-  Non Forest Service Lands
-  US Forest Service Lands

Data Sources:

- USFS
- Enterprise Data Warehouse:
- USFS Ownership
- USFS Forest Boundary



0 15 30 60 90 Miles
 1 inch = 35 miles



Author: M.Bergkamp-Hattis
 USFS Northern Regional Office
 January 2020